

P03 Tracking PTZ IP Camera Quick Start Guide

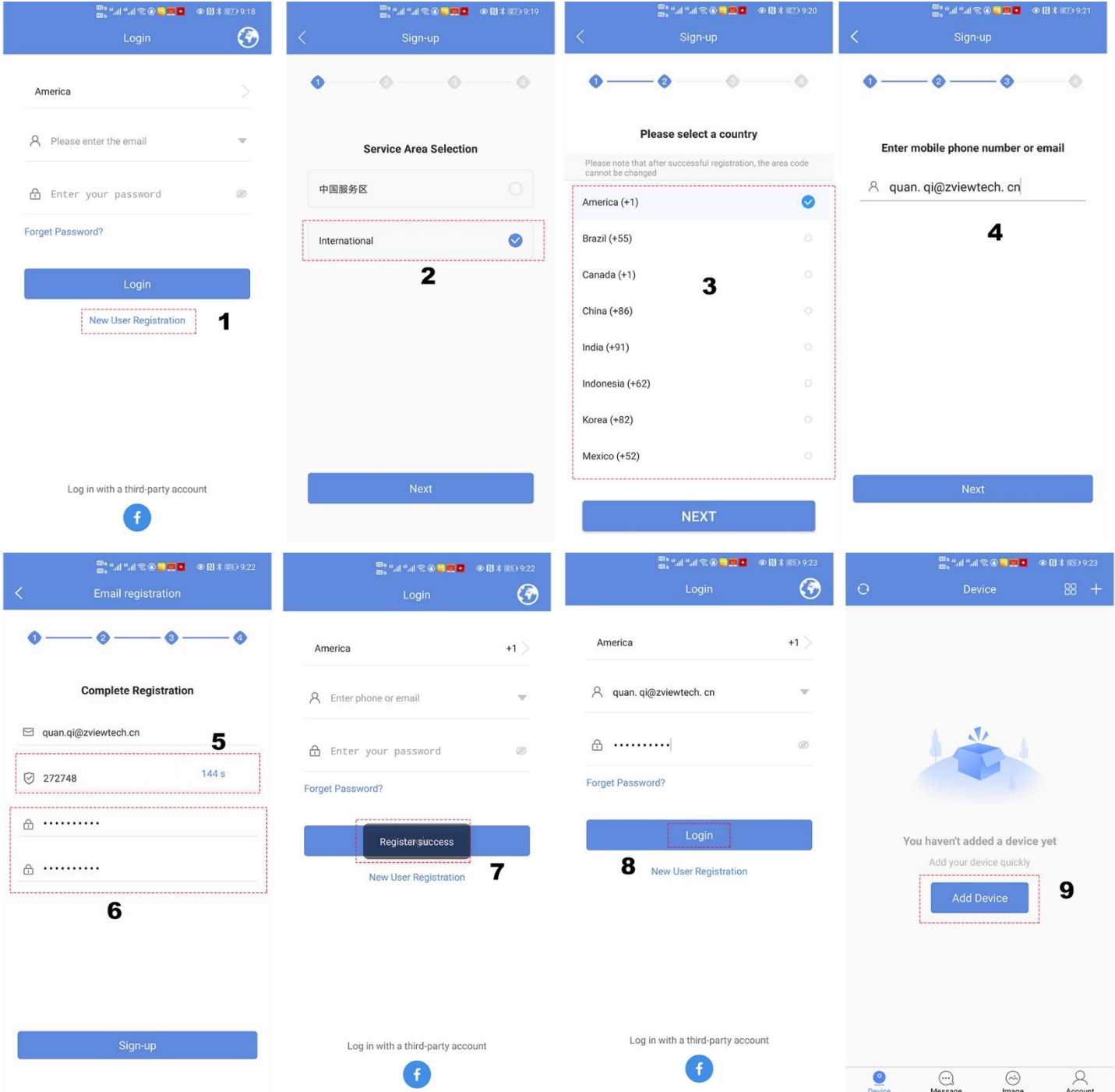
Part 1 【P6sLite mobile APP Quick Start Guide】

1, Mobile phone APP (P6sLite) installation and login:

Scan the QR code above to enter the download page

1), select the corresponding download option to download the mobile phone APP and manual, of course, can also download the PC software, currently only supports Windows OS software download.

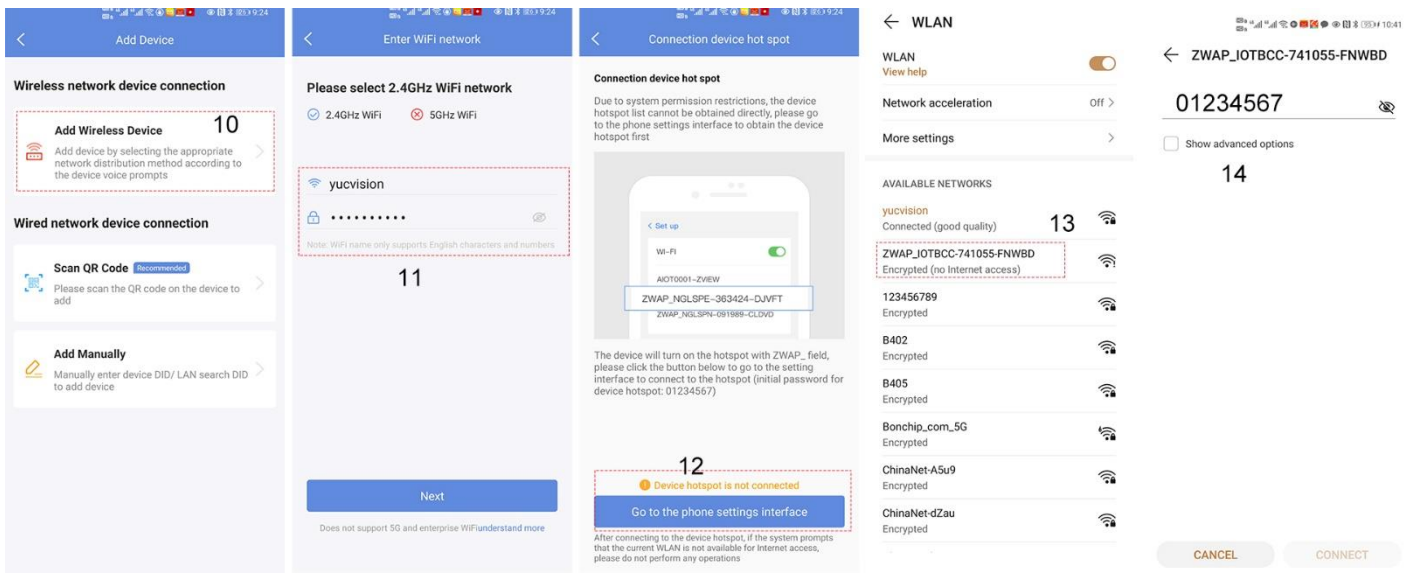
2), download the APP and install it, as shown below:



3), The P6sLite APP needs to register an account to log in and manage the camera. Complete the account registration as shown in the figure above. In the fifth step, please log in to your email to get the verification code

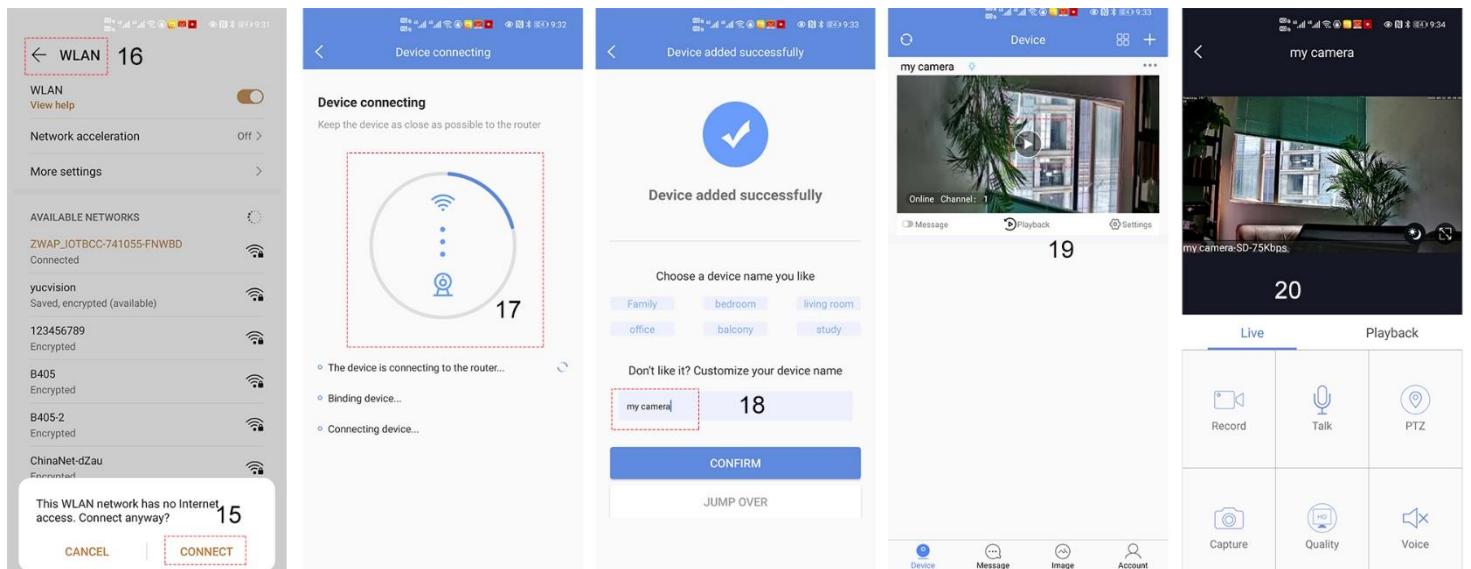
2, Add device

1, AP configuration: To add a camera in this mode, you only need to connect the power adapter, please do not connect the Ethernet cable. If you cannot find the hotspot, please reset the camera (the reset button is on the pigtail cable of the camera) (for WIFI wireless camera)



1), Go to APP Home page and click + for add camera. Select "Add device" Connect as shown in Figure 10. In the eleventh step, you need to enter your router password.

When proceeding to the thirteenth step, please select the AP hotspot name starting with ZWAP. And enter the password: 01234567. Connect the camera (if you cannot find it, refresh or reset the camera again (there is a reset button on the pigtail cable of the camera, press and hold the camera for 10 seconds to reset). Then click "Connect". If a prompt of 15 appears, please click "CONNECT" directly

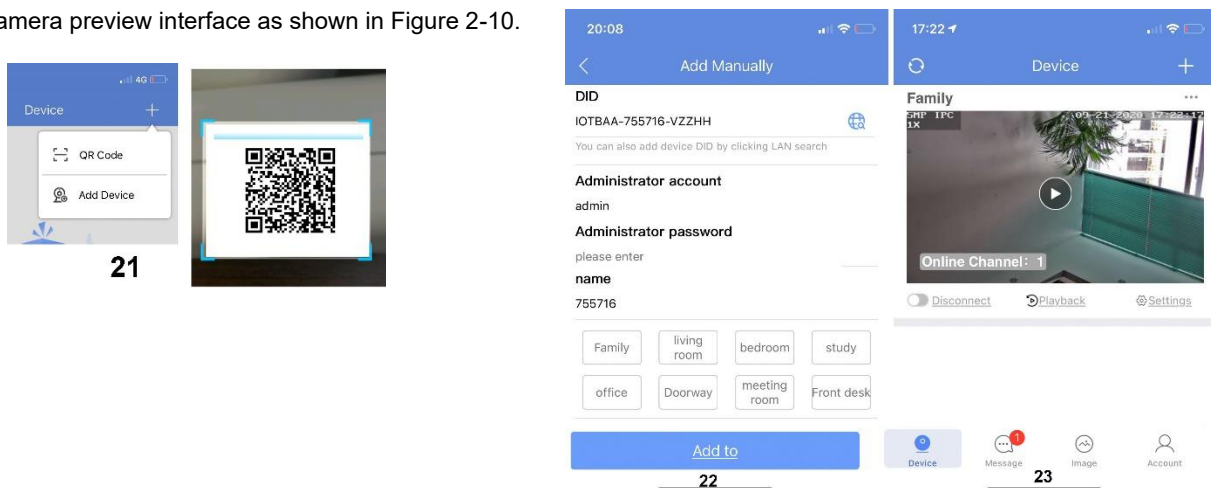


2), The camera automatically configures WIFI. After waiting for the completion of the seventeenth step, in the eighteenth step, you can give the camera a name. Then click "confirm". To complete the above steps, the operation of configuring the camera to connect to the WIFI router through the hotspot is completed. You can start using the camera now

2, **QR code added** (The camera has been wired to your router)

1), Open APP Home page, click the ⊕ icon in the upper right corner, select the QR code (you can also click on the sweep) as shown in Figure 2-8. The two-dimensional code recognition will enter the Add Device interface as shown in Figure 21.

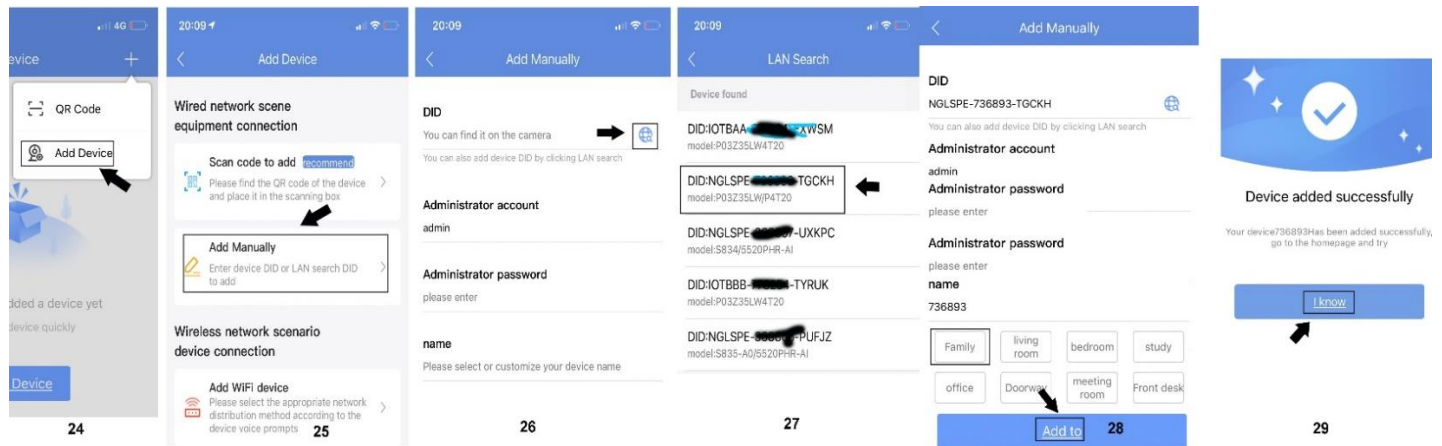
2), Add a successful APP will return to the device home page interface, click the home page list to show the connected device. Will enter the camera preview interface as shown in Figure 2-10.



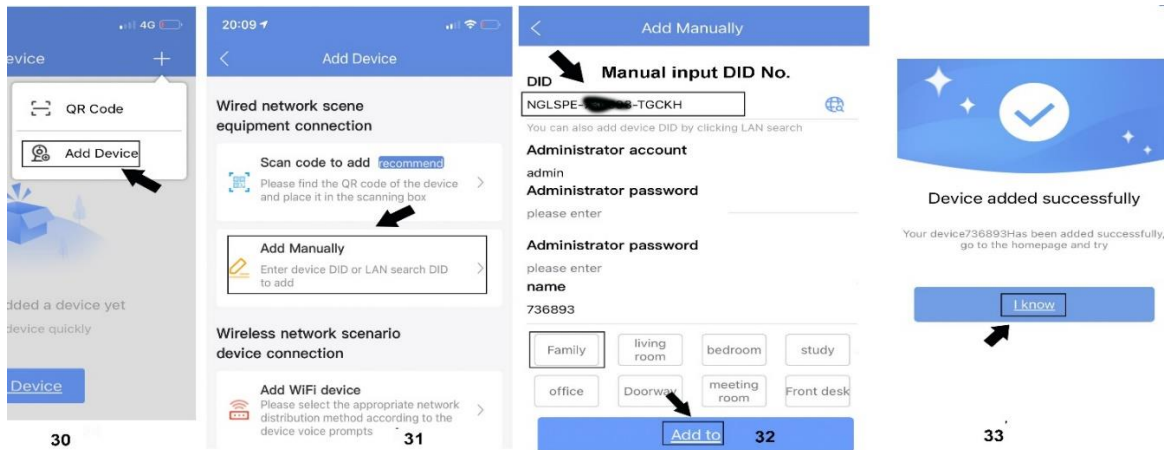
5. Add LAN device(The camera has been connected to the wide area network)

The camera must be connected with 12V power supply and network cable (Note: The camera has enabled the DHCP function by default. Please ensure that your network is normal, and the device to be added by the APP must be in the same network environment. If it cannot be added, please check Your network is not a product quality issue)

- 1), Open APP Home page, click the + in the upper right corner, and select Add Device as shown in Figure 24.
- 2), Click to search for the device as shown in Figure 26. Tthe password is empty. click "Add to"



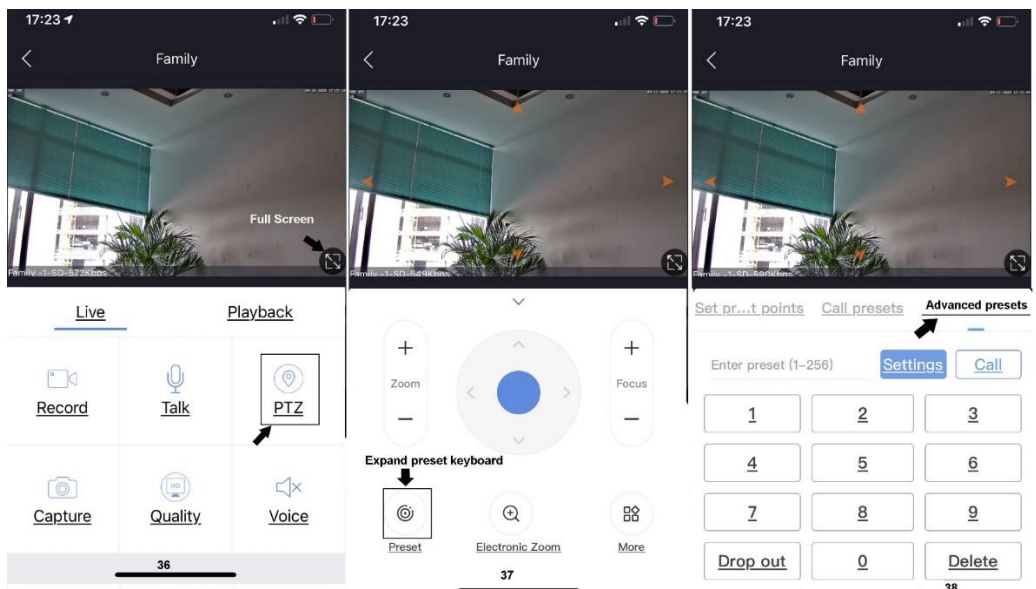
6, **Manually add:** Open APP Home page, click + the icon in the upper right corner and select "Add manually" as shown in Figure 31. As shown in Figure 32, the name can be entered according to your needs; the DID number can be found on the airframe or the outer package. Note the case when entering the UID. User name and password are the default for the first time.



Complete the operation of 33. Click "I Know". Added successfully .APP will return to the device's home page.

2. Set and Call preset:

Click the "PTZ" on the APP interface, Go the preset position setting keyboard, please select "advanced preset position" and the APP will pop up Numeric keypad button. You can use this numeric keypad to set presets, call presets and turn on some special features. If we need to set the 1 th preset , we need to Click 1 on the keyboard, then click the " **Settings** " button to set 1th preset successfully; if you want to call 1th preset, click 1 on the keyboard, Then click " **Call** " , Call 1th preset successfully



Part 2 【Function Operation and Description】

Professional name explanation;

Set:set preset, Call:Call preset. [N]+[set]=Enter N first and then click SET. "+"=Then

1,Preset settings

Rotate the camera to the position you want, then set this position to "N" preset

[N] +[SET] ,N is preset point, 1-255 number can be optional (But the command Preset isn't include). Set= set preset

2,Call preset(need set the corresponding preset point) : [N]+[CALL]

N for preset point, 1-255 number can be optional, camera can move to preset point after call, Zoom, focus and aperture lens will automatically change to preset parameters , camera preset display on the monitor.

3,Delete all preset point: [100] +[CALL] ,Call no.100 preset, clear the all preset :[1]+[0]+[0]+[CALL] .

4,Auto scan(Horizontal rotation)

[120]+[CALL], call No.120 ,the lever of 360 /355 degree clockwise automatic scanning

Modify speed of Auto scan :

[121]+[Set] +[N]+[Set]; (N=1-10; N represents scan speed percentage,default is 8=80%)

If you want to change speed of auto scan to **50%**; Setting method: [121]+[Set] +[5]+[Set]

5,The inspection group programming

Before you start cruising, you first need to set the preset position in the cruise path.**Please refer to " 3.Preset settings"**

[101]+[CALL] for Open the first Cruise of 1-16 to scan ; [102]+[CALL] for Open second Cruise of 17-32 to scan

[103]+[CALL] for Open the third Cruise of 33-48 to scan

Modify the stay time of the Cruise:

[123] +[Set] + [N]+[Set]; (N=3-10; N represents the dwell time at each preset,default is 5 seconds)

If you change the dwell time to **10 seconds**. Setting method:[123]+[Set] + [10]+[Set]

Modify speed of the Cruise:[115]+[Set] + [N]+[Set]; (N=1-10; N represents Cruising speed percentage,default is 8=80%)

If you change speed of the Cruise to **40%**; Setting method:[115]+[Set] + [4]+[Set]

6,Left and right limit scan settings

The users can set left and right limit point in the range of the rotation, the speed dome can return scan in setting range

[81]+[SET]: left limit; [82]+[SET]: right limit, [83]+[CALL]: start right and left limit scan

Modify the speed of right and left limit scan:

[141] +[SET]+[N] +[SET]; (N=1-10; N represents Cruising speed percentage,default is 5=50%)

If you change speed of the limit scan to **100%**; Setting method:[141]+[Set] + [10]+[Set]

7,Idle action settings:The camera performs a certain function in standby mode

[130]+[Call]: Open Idle position Set; [130]+[set]:OFF Idle position set / **Idle position setting:**[131]+[Set]+[N]+[Call],

N=Function preset;When N=98, the camera Open the first Cruise of 1-16 to scan function. Setting method:[131]+[SET]+ [98]+[CALL]

Set the time when the idle action start: [132]+[set]+[N]+[SET]; (N=1-30; N represents Idle time,default is 5 minutes)

8,Home/return position setting:The position where the camera returns when the camera is in standby mode

Set watch position:Rotate the camera to the position you want, then [125]+[SET] , and the current position is the watch position, and turn this feature on. When the camera is in standby, the camera will automatically rotate to this position.

Setting method:[125]+[SET]

Delete watch position: [125]+[CALL] for delete watch position; Setting method:[125]+[CALL]

Set the watch start time: [126]+[set]+ [N]+[SET] ;(N=1-10 minutes; N represents start time time,default is 5 minutes)

9,Restore factory settings

[106]+[Call]+[64]+[CALL] for restore PTZ speed dome to factory setting; Setting method:[106]+[Call]+[64]+[CALL]

10.IR light settings

1) The brightness settings for all lamp: [122]+ [set] +[N]+[set]; (N=1-10; default is 8=80%). Setting method: [122]+[SET]+[N]+[SET]

2) An infrared detection threshold setting:

[91]+[SET]+[N]+[SET] (N=1-10;N represents Ambient light brightness,1-10=0.1Lux-1LUX)

Setting method: [91]+[preset]+[N]+[preset]; If you want the IR light to turn on at **0.5LUX**, Setting method: [91]+[preset]+[5]+[SET]

3) IR light auto mode:Infrared light is controlled by changes in light brightness; Setting method: [137]+[Call]

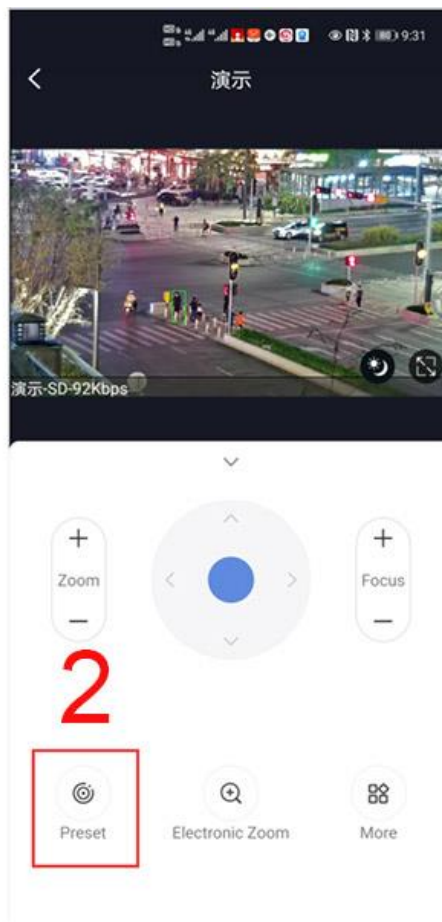
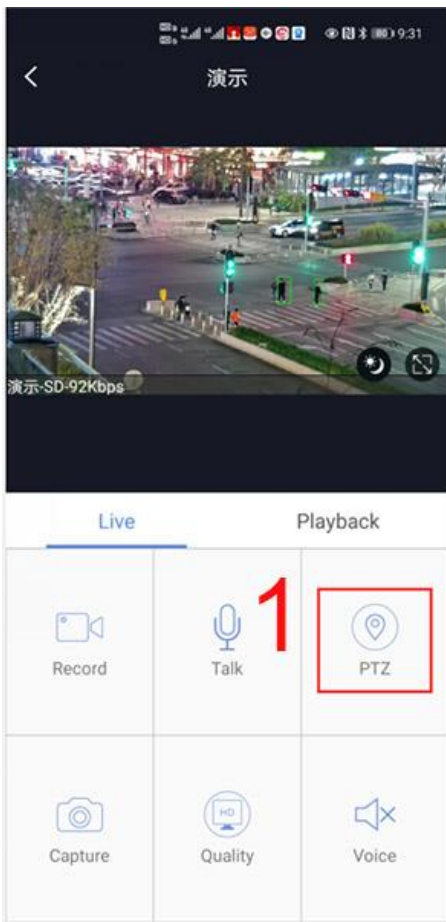
4) IR light Forced on mode:The infrared light is always on, day or night, and the camera stays in night mode.

Setting method: [138]+[Call]

5) IR light Forced to close. The infrared light is always off during the day or night, and the camera is in day mode.

Setting method: [139]+[Call]

11,Start/Stop tracking (Default Stop)



The camera Tracking is Divided into 2 modes:

1,Fixed point tracking:

Fixed point tracking based on a return position. Return to the return position and wait for the next track. When the tracking is over, before turning on the track function, you need to set the return position (Home position) after the end of the tracking.

The camera will turn on tracking when a human is detected. After tracking is completed, the camera automatically returns to the return position and continues to wait for the next tracking. We define the return position as preset 88th.

Setting method: Rotate the camera to the position you want, then enter 88 on the keyboard, and click "set" to complete the setting of the return position. Setting method: [88]+[set]

Turn on Fixed tracking: Enter 97 and click "Call", the camera will turn on auto tracking, Setting method "[97]+[CALL]"

2,Cruise tracking: Based on the cruise tracking between some preset positions (max support 16 positions). When a human is found in cruising, the camera will automatically turn on human tracking. When the human disappears, the camera will automatically go to the next position to continue cruising.

Setting method: Rotate the camera to the position you want, then enter 1 on the keyboard, and click "set" the 1th preset position is set successfully. By analogy, you can set up to 16 positions.

Set 1,2,3... max support 16 preset positions,

Turn on cruise tracking: Enter 98 and click "Call" the camera will auto turn on cruise tracking

Setting method: [98]+[Call] for turn on cruise tracking

How to Turn off Tracking

Enter 96 and click "Set", the camera will turn off tracking (Fixed and cruise tracking)

Setting method: [96]+[Set]

Note: The camera will automatically resume tracking after 5 minutes when manually controlling the camera, and this wait time can be modified. Please refer to the camera preset instruction table on the next page.

Part 3 【Common functions operating Express 】

Function name	Explanation	Preset	Call	Set
Set return position	position of the camera return after the end of the tracking	88		√
Turn OFF auto tracking	Turn off auto tracking (default)	96		√
Turn On auto tracking	Turn On auto tracking	97	√	
Turn on cruise tracking	Turn on some preset position cruise tracking	98	√	
Tracking end Waiting time	153+Set+N+Set,N=1-15 seconds ,default N=5 Seconds	153		√
Re- tracking time when manual control end	158+Set+N+Set, N=1-10 minutes,Default N=5 minutes	158		√
Re- cruise tracking time when manual control end	159+Set+N+Set, N=1-10 minutes,Default N=5 minutes	159		√
Level track speed set	150+Set +N+Set, N=1-100% MAX speed=45 °/Seccond	150		√
Vertical track speed set	151+Set +N+Set , N=1-100% MAX speed=45 °/Seccond	151		√
Tracking zoom control	95+set for turn on ZOOM(default);95+call for turn off Zoom when camera tracking	95	√	√
IR light auto mode	Infrared light is controlled by changes in light brightness	137	√	
IR light Forced on mode	IR light is always on, and the camera stays in night mode.	138	√	
IR light Forced to close	IR light is always off during , and the camera is in day mode	139	√	
IR detection threshold setting	91+Set+ N+Set; (N=1-10;N represents Ambient light brightness,1-10=0.1Lux-1LUX)	91		√
Dipped beam and high beam switch	The user can arbitrarily set the near light and the remote light to switch position.	92	√	
Full IR open	The user can arbitrarily set the position where the near light and the far light are simultaneously turned on.	93	√	
IR brightness adjustment	brightness set for all IR: 122 + set +N+Set; (N=1-10; default is 8=80%)	122		√
Auto scan(pan)	the lever of 360 /355 degree clockwise automatic scanning	120	√	
Modify speed of Auto scan	121+set +N+Set;(N=1-10; N represents scan speed percentage,default is 8=80%)	121		√
Open the first cruise	Open the cruise	101	√	
Set cruise speed	115+Set+N+Set; (N=1-10; N represents Cruising speed percentage,default is 8=80%)	150		√
Modify the stay time of the Cruise	123+set+ N+Set; (N=3-10; N represents the dwell time at each preset,default is 5 seconds)	123		√
Left limit	Set Left limit	81		√
Right limit	Set Right limit	82		√
Open limit scan	Open limit scan	83	√	
Modify the speed limit scan	Modify the speed of right and left limit scan: 141+set +N+Set; (N=1-10; N represents Cruising speed percentage,default is 5=50%)	141		√
Set and open the Home position	Rotate the camera to the position you want, then set 125+ Set, and the current position is the Home position, and turn this feature on. When the camera is in standby, the camera will automatically rotate to this position	125		√
Delete watch position		125	√	
Set the watch start time	126+set +N+Set; (N=1-10 ; N represents start time,default is 5 minutes)	126		√
Open Idle action	Open Idle action	130	√	
Close Idle action	Close Idle action	130		√
Idle action Setting	131+Set + N+Call ,N=Function preset	131		√
Set the time when the idle action starts	Set the time when the idle action starts: 132+set+ N+Set (N=1-30; N represents Idle time,default is 5 minutes)	132		√
Open Lens focal length and speed match	PTZ speed, lens zoom automatic matching is enabled (default is on)	108	√	
Len and speed match	Close Lens focal length and speed match,Turn off automatic matching	108		√
Focus mode setting	77+set+N+Call When N=1 The camera triggers auto focus only when controlling ZOOM When N=2 The camera triggers auto focus when any one of P/T/Z changes When N=3 The camera triggers auto focus when the P/T/Z+ video changes	77		√
Focus distance setting	78+set+N+Call When N=1 Minimum focusing distance: 1.5 meters When N=2 Minimum focusing distance: 3 meters When N=3 Minimum focusing distance: 6 meters	78		√
Delete all preset point	Delete all preset point	100	√	
pan/tilt correction	107+Set+ 64+Call	107	√	
Restore factory settings	106+Call+64+Call	106	√	